

ROUND HEAD SQUARE NECK BOLTS

ANSI/ASME
B18.5
1978

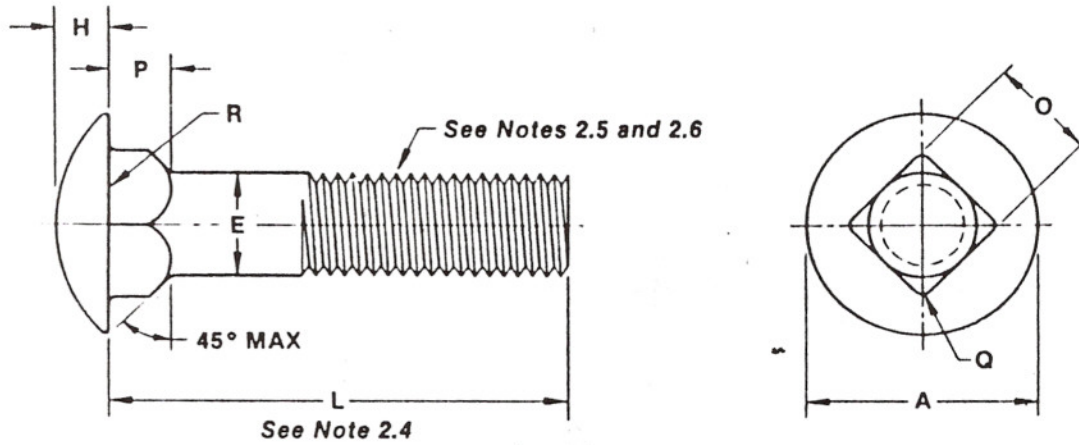


Table 2 Dimensions of Round Head Square Neck Bolts

Nominal Size or Basic Bolt Diameter	E		A		H		O		P		Q	R	
	Body Diameter		Head Diameter		Head Height		Square Width		Square Depth		Corner Radius on Square	Fillet Radius	
	Max	Min	Max	Min	Max	Min	Max	Min	Max	Min	Max	Max	
No. 10	0.1900	0.199	0.182	0.469	0.438	0.114	0.094	0.199	0.185	0.125	0.094	0.031	0.031
1/4	0.2500	0.260	0.237	0.594	0.563	0.145	0.125	0.260	0.245	0.156	0.125	0.031	0.031
5/16	0.3125	0.324	0.298	0.719	0.688	0.176	0.156	0.324	0.307	0.187	0.156	0.031	0.031
3/8	0.3750	0.388	0.360	0.844	0.782	0.208	0.188	0.388	0.368	0.219	0.188	0.047	0.031
7/16	0.4375	0.452	0.421	0.969	0.907	0.239	0.219	0.452	0.431	0.250	0.219	0.047	0.031
1/2	0.5000	0.515	0.483	1.094	1.032	0.270	0.250	0.515	0.492	0.281	0.250	0.047	0.031
5/8	0.6250	0.642	0.605	1.344	1.219	0.344	0.313	0.642	0.616	0.344	0.313	0.078	0.062
3/4	0.7500	0.768	0.729	1.594	1.469	0.406	0.375	0.768	0.741	0.406	0.375	0.078	0.062
7/8	0.8750	0.895	0.852	1.844	1.719	0.469	0.438	0.895	0.865	0.469	0.438	0.094	0.062
1	1.0000	1.022	0.976	2.094	1.969	0.531	0.500	1.022	0.990	0.531	0.500	0.094	0.062
See Notes	1, 2.11	2.3		2.1.2		2.1.1				2.2.1		2.2.2	2.1.3

Notes:

1. Nominal Size. Where specifying nominal size in decimals, zeros preceding decimal and in the fourth decimal place shall be omitted.
2. For other Notes and additional requirements, refer to the Introductory Notes and General Data, page C-36.
3. Weights. Weights of round head square neck bolts are given on page M-18.